

The Articulated Hauler is a platform for a wide range of different applications. CeDe Group has been very successful in this business and we have delivered these units in the last couple of months.

Volvo Articulated Hauler equipped with a flatbed for stone handling.

This flatbed is designed to transport big blocks of marble, 28 tonnes.

A flatbed on a Volvo articulated hauler is the perfect solution when you need to transport heavy loads of stone in a challenging environment.

The blocks are loaded on the flatbed with a wheel loader and there are openings for the forks. The openings can be closed with steel covers when the flatbed is used for other purposes.

The flatbed is covered with wood for protection of the blocks. The wood can easily be changed when worn.



Volvo A30F with flatbed



Holes for lashing chains



Protection of wood



Steel covers for fork recess



Toolbox for lashing chains

Volvo Articulated Hauler with a hook lift system mounted on the hauler chassis gives an outstanding flexibility.

From waste handling on landfill sites to material transportation in steel mills. From industrial applications to loading/unloading operations in harbours and train stations.

The XR S hook lift features a sliding mechanism that offers a low operating radius during the loading/unloading cycle. XR S models range has a lifting capacity from 14 to 30 tonnes. The hook lift can handle a wide range of different options as Dump bodies, Flat beds, Hook lift containers, Roll-off containers and Concrete mixer or Water tank.

To increase stability during loading/unloading, the Articulated Hauler, in this



Volvo A25F with XR S hook-lift



The operating panel in cab

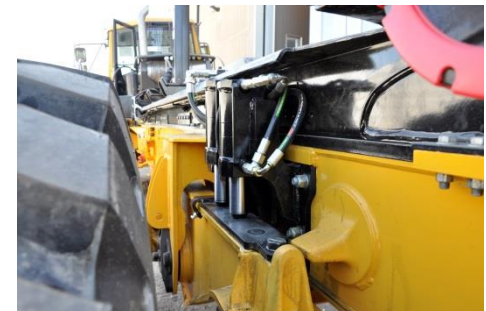
application, is equipped with CeDe Group (Design protected) Bogie-stabilisation system.

The following lifting-capacities are available:

A25F	26 tonnes
A30F	30 tonnes



Good visibility for easy pick-up



CeDe Group Bogie stabilisation

Volvo A40F with extended chassis and a 40m³ water tank is designed for heavy-duty actions in demanding environments.

For example, to dampen down dusty areas on construction sites, preparing the surface for road building, or in quarries. The water tank is very useful for simple water transportation but it can also be fitted with several optional features for more demanding tasks.

Water tank in combination with water pump, spray nozzle on spreading ramp or water cannon gives additional possibilities. The water pump and the spraying system are conveniently operated from the control panel in the hauler cab. Low-level fixed ramp of heavy tube for free fall spreading of water in the vehicle width or water spreading ramp with several spray nozzles for watering



A40F with 40m³ water tank



Spreading up to 25 metres



Working lights



Rear extension of chassis



A40F with 1700mm extension

large areas. The pump and ramp tube can easily be maintained.

The water tank volume is adapted for each size of hauler, short (SWB) or long wheel-base (LWB).

A25F SWB	20m ³
A35F SWB	30m ³
A40F LWB	40m ³